



VISHAY INTERTECHNOLOGY, INC.

INSTRUMENTS

WEIGHT INDICATORS

Vishay Transducers

PRODUCT OVERVIEW





WEIGHT INDICATORS

Vishay Transducers

Products	Features
<p>VT 50/VT 100</p> 	<p>General-purpose weight indicators for platform, bench scales and weighbridges. The heavy-duty plastic enclosure is designed for desktop, wall (tilt) mount, or post mount. RS232 serial port enables connection to PC and serial printer. Ticket formats can be downloaded via the keypad or communication port. VT 100 is OIML- and NTEP-approved to 10,000 d.</p> <ul style="list-style-type: none">• LED display• 30 Samples per second• Three-level digital filtering• Serial printer and EDP/PC support• Programmable ticket format with consecutive transaction numbering
<p>VT 120</p> 	<p>General-purpose weight indicators for platform, bench scales and weighbridges. The heavy-duty plastic enclosure is designed for desktop, wall (tilt) mount, or post mount. RS232 serial port enables connection to PC and serial printer. Ticket formats can be downloaded via the keypad or communication port. VT 120 is OIML-approved to 10,000 d.</p> <ul style="list-style-type: none">• LCD display with back light• Numeric key pad• 30 Samples per second• Internal rechargeable battery• Serial printer and EDP/PC support• Programmable ticket format with consecutive transaction numbering• Preset tare with ten tare memories
<p>VT 200/VT 220</p>  <p>(Aluminum case)</p>  <p>(Stainless steel case)</p>	<p>Versatile unit with a wide range of industrial and commercial applications. Automatic date and time storage with the real-time clock option clearly documents all printout records. Additional digital and analog inputs and outputs can be supported by optional add-on modules. VT 200/220 is OIML- and NTEP-approved.</p> <ul style="list-style-type: none">• Dual range and dual interval• Counting mode• 70 Samples per second• Serial printer support with programmable ticket format• Alibi (Flash) memory• Stainless steel enclosure, IP65; or Aluminum enclosure, IP54• RS485 serial interfaces (option)• Real-time clock (option)• Two setpoints, opto-isolated (option)• Analog output 0–10 Vdc or 4–20 mA (option)• Dual scale operation (option)
<p>VT 300</p> 	<p>Designed primarily for weighbridge applications. Its software manages various transactions, allowing choices of customer, material type or truck identification. All the activities are stored in non-volatile memory and available to be reported in four programmable printing formats. VT 300 is OIML- and NTEP-approved.</p> <ul style="list-style-type: none">• Dual range and dual interval• 27 Keys, pseudo-alphanumeric and functions keyboard• 16 Character dot-matrix LCD display with backlight• Two opto-isolated setpoints• Alibi (Flash) memory• Programmable transactions database• Four programmable ticket formats• Counting mode• Dual scale operation (option)• Analog output (option)• RS485 serial interface (option)



WEIGHT INDICATORS

Vishay Transducers

One-Stop Shop for Weighing Applications

In combination with Vishay Transducers' load cell product line, our weight indicators provide complete solutions for weighing applications.

Covering most weighing applications

- Platforms
- Weighbridges
- Inventory control
- Material handling
- Process control

Wide range of installations types

- Desktop
- Wall mount
- Panel mount
- DIN rail mount

World-wide weighing approvals

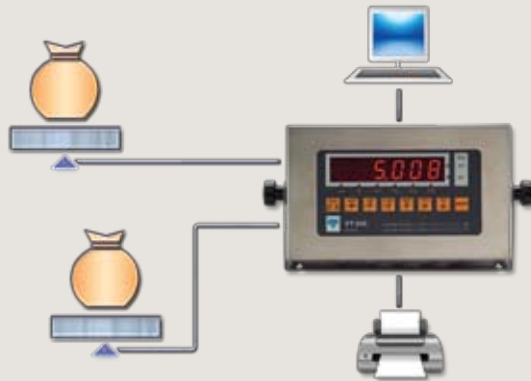
- OIML R-76
- NTEP H44

APPLICATION SELECTION GUIDE										
Application	Products									
	VT 50	VT 100	VT 120	VT 200/220	VT 300	VT 400	VT 500	PS-1040	PS-1045	PS-1050
Platforms, Bench Scales	●	●	●	●	●					
Counting				●	●					
Weighbridges	●	●		●	●					
Material Handling					○	●	●	●	●	●
Bagging Scales							●			
Hopper Scales							●			
Stand-alone Batching						●	●	○	○	○
Networked Batching						○	●	●	●	●

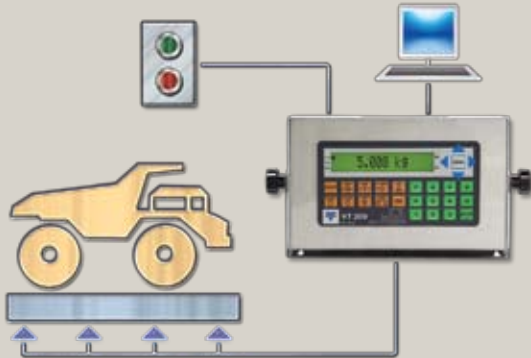
● Fully compatible with the application requirements
 ● Partially compatible with the application requirements
 ○ Limited compatibility with the application requirements

APPLICATIONS

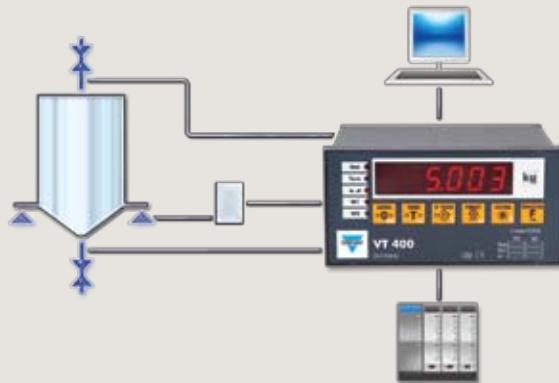
**Platform, Bench Scales
Counting Scales
Inventory Control
Various Industrial Weighing Systems**



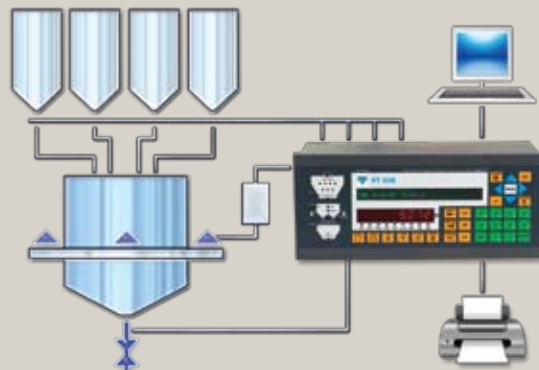
**Weighbridges
Inventory Control
Industrial Weighing Systems
Bench, Floor, and Counting Scales**



**Material Handling
Process Weighing
Inventory Control**



**Hopper Scales
Gross and Net Weighers
Drum-Filling Scales
Bagging Scales**





FEATURES AND SPECIFICATIONS

Product	Application	Enclosure	Mounting Options				Display
			Desktop	Wall	Panel	DIN-Rail	
VT 50	Platform, Bench Scales, Inventory Monitoring	ABS	x	x	With Adaptor		LED
VT 100	Platform, Bench Scales, Inventory Monitoring	ABS	x	x	With Adaptor		LED
VT 120	Platform, Bench Scales, Inventory Monitoring, Medical	ABS	x	x	With Adaptor		LCD
VT 200	Platform, Bench Scales, Inventory Monitoring, Counting	Stainless Steel		x			LED
		Aluminum	x	x			
VT 220	Platform, Bench Scales, Inventory Monitoring, Counting	Stainless Steel		x			LCD
		Aluminum	x	x			
VT 300	Weighbridge, Platforms, Counting	Stainless Steel		x			LCD
		Aluminum	x	x			
VT 400	Mixing, Stand-alone Batching	ABS			x		LED
VT 500	Bulk Handling— Hopper Scales, Belt Weigher, Bagging Scales	Steel			x		LED + VFD 2 x 40 Characters
PS-1040	Batching Systems	ABS				x	-
PS-1045	Batching Systems	ABS				x	LED
PS-1050	Batching Systems	ABS			x		LED



No. of Keys	Key Functionality	IP Level	Communication	Set Points	Approvals	Battery Operation
5	Basic	IP54	RS232	-	-	-
5	Basic	IP54	RS232	-	OIML 10,000 NTEP 10,000	-
18	Basic	IP54	RS232	-	OIML 10,000	Yes
8	Basic	IP65	RS232 Option RS485	2	OIML 10,000 NTEP 10,000	-
		IP54				
8	Basic	IP65	RS232 Option RS485	2	OIML 10,000 NTEP 10,000	-
		IP54				Optional
28	Alphanumeric + Functions	IP65	RS232 Option RS485	2	OIML 10,000 NTEP 10,000	-
		IP54				Optional
5	Basic	IP40; Optional IP54 Panel Cover	RS232 Option RS485	2	OIML 10,000 NTEP 10,000	-
33	Alphanumeric + Functions	IP54 Front Panel; IP40 Enclosure	4 ch. RS232/RS485 Printer	32 (I) 32(O)	OIML 10,000 NTEP 10,000	-
-	-	IP20	RS485; 0–10 V; 4–20 mA		-	-
5	Basic	IP20	RS485; Modbus; 4–20 mA; 0–10 V		-	-
5	Basic	IP20	RS485; Modbus; 4–20 mA; 0–10 V; Profibus (option)	2	-	-

Products	Features
<p>VT 400</p> 	<p>Weight controller provides weighing and control functions for industrial batch/blend/mix process systems. Two opto-isolated control outputs, a choice of up to two serial interface (RS232 and RS485) an analog output (optional) allow full communication with higher level PCs and PLCs. Up to 30 units can be interconnected through the RS485 network. VT 400 is OIML- and NTEP-approved.</p> <ul style="list-style-type: none"> • Panel mount • 70 Samples per second • Two opto-isolated setpoint outputs • RS232 and/or RS485 serial ports • Alibi (Flash) memory • Power supply—24 Vdc • Analog output 0–10 Vdc or 4–20 mA (optional)
<p>VT 500</p> 	<p>Weighing controller designed for automatic discontinues weighing systems in bulk handling processes. It offers high-accuracy, high speed weighing, extensive control capabilities, easy adaptation and optimization of the process parameters and powerful data management. VT 500 is OIML- and NTEP-approved.</p> <ul style="list-style-type: none"> • Process control terminal • Special software for hopper scales and bagging scales • LED and VFD display • Full alphanumeric keyboard • 228 Samples per second • In-flight compensation capability • Two analog output for PLC interface (option) • 16 Opto-isolated outputs • 16 Digital inputs • Process parameters protected by password
<p>PS-1040/PS-1045</p> 	<p>Batching system weighing indicator provides digital or isolated analog output signal for tank/bin/hopper weighing systems. High level serial communication is available in RS232, or RS485 format with Modbus RTU or Profibus protocol. Up to 32 transmitters can be connected point-to-point.</p> <ul style="list-style-type: none"> • DIN rail mount digital/analog transmitter • 10 Points load cell linearization • 0–10 Vdc or 4–20 mA isolated analog output • Peak-hold measurement • Datasheet or dead load calibration • Serial communication with Modbus RTU protocol • Profibus interface (option)
<p>PS-1050</p> 	<p>Batching system weighing indicator provides digital or isolated analog output signal for tank/bin/hopper weighing systems. An isolated 0–10 V or 4–20 mA analog output provides factory floor communication for a data logger, remote panel meter, or PLC input. High level serial communication is available in RS232, or RS485 format with Modbus RTU or Profibus protocol. Up to 32 transmitters can be connected point-to-point.</p> <ul style="list-style-type: none"> • Panel mount • 10 Points load cell linearization • Selectable 0–10 Vdc or 4–20 mA isolated analog output • Peak-hold measurement • Datasheet or dead load calibration • Serial communication with Modbus RTU protocol • Profibus interface (option)

DISCLAIMER All product specifications and data are subject to change without notice. Vishay Intertechnology, Inc., its affiliates, agents, and employees, and all persons acting on its or their behalf (collectively, "Vishay"), disclaim any and all liability for any errors, inaccuracies or incompleteness contained herein or in any other disclosure relating to any product. Vishay disclaims any and all liability arising out of the use or application of any product described herein or of any information provided herein to the maximum extent permitted by law. The product specifications do not expand or otherwise modify Vishay's terms and conditions of purchase, including but not limited to the warranty expressed therein, which apply to these products. No license, express or implied, by estoppel or otherwise, to any intellectual property rights is granted by this document or by any conduct of Vishay. The products shown herein are not designed for use in medical, life-saving, or life-sustaining applications unless otherwise expressly indicated. Customers using or selling Vishay products not expressly indicated for use in such applications do so entirely at their own risk and agree to fully indemnify Vishay for any damages arising or resulting from such use or sale. Please contact authorized Vishay personnel to obtain written terms and conditions regarding products designed for such applications. Product names and markings noted herein may be trademarks of their respective owners.

VISHAY MEASUREMENTS GROUP:

Vishay Micro-Measurements
Vishay Transducers
Vishay Systems – Weighing and Force Measurements



One of the World's Largest Manufacturers of
Discrete Semiconductors and Passive Components

WORLDWIDE SALES CONTACTS

THE AMERICAS

UNITED STATES

VISHAY TRANSDUCERS AMERICAS
801 SENTOUS AVENUE
CITY OF INDUSTRY, CA 91748
UNITED STATES
PH: +1-800-872-4784 (TOLL FREE*)
+1-626-363-7500
FAX: +1-626-332-3418
E-MAIL: VT.US@VISHAYMG.COM
*US ONLY, OUTSIDE CALIFORNIA

ASIA

TAIWAN, R.O.C.

VISHAY TRANSDUCERS TAIWAN*
8F-1, 171, SECTION 2, DATONG ROAD
SIJHIH CITY, TAIPEI, 22183
TAIWAN, R.O.C.
PH: +886-2-8692-6888
FAX: +886-2-8692-6818
E-MAIL: VT.ROC@VISHAYMG.COM
*ASIA EXCEPT P.R. CHINA

P.R. CHINA

VISHAY TRANSDUCERS CHINA
NO. 5 BINGUAN NAN DAO YOUYI RD.
HEXI DISTRICT
CODE 300061, TIANJIN
P.R. CHINA
PH: +86-22-2835-3503
FAX: +86-22-2835-7261
E-MAIL: VT.CHINA@VISHAY.COM

INDIA

VISHAY TRANSDUCERS INDIA LTD.
#117, OLD MAHABALIPURAM ROAD
KARAPAKKAM
CHENNAI - 600 097
INDIA
PH: +91-44-3917-4000
FAX: +91-44-3917-4002
E-MAIL: SALES.INDIA@VISHAY.COM

EUROPE

UNITED KINGDOM

VISHAY MEASUREMENTS GROUP UK
STROUDLEY ROAD, BASINGSTOKE
HAMPSHIRE RG24 8FW
UNITED KINGDOM
PH: +44-125-646-2131
FAX: +44-125-647-1441
E-MAIL: VT.UK@VISHAYMG.COM

GERMANY

VISHAY MEASUREMENTS GROUP GERMANY
TATSCHENWEG 1
74078 HEILBRONN
GERMANY
PH: +49-7131-39099-0
FAX: +49-7131-39099-229
E-MAIL: VT.DE@VISHAYMG.COM

FRANCE

VISHAY MEASUREMENTS GROUP FRANCE
16 RUE FRANCIS VOVELLE
28000 CHARTRES
FRANCE
PH: +33-2-37-33-31-20
FAX: +33-2-37-33-31-29
E-MAIL: VT.FR@VISHAYMG.COM

ISRAEL

VISHAY MEASUREMENTS GROUP ISRAEL
8A HAZORAN STREET
P.O. BOX 8381
NETANYA 42506
ISRAEL
PH: +972-9-863-8888
FAX: +972-9-863-8800
E-MAIL: VT.IL@VISHAYMG.COM